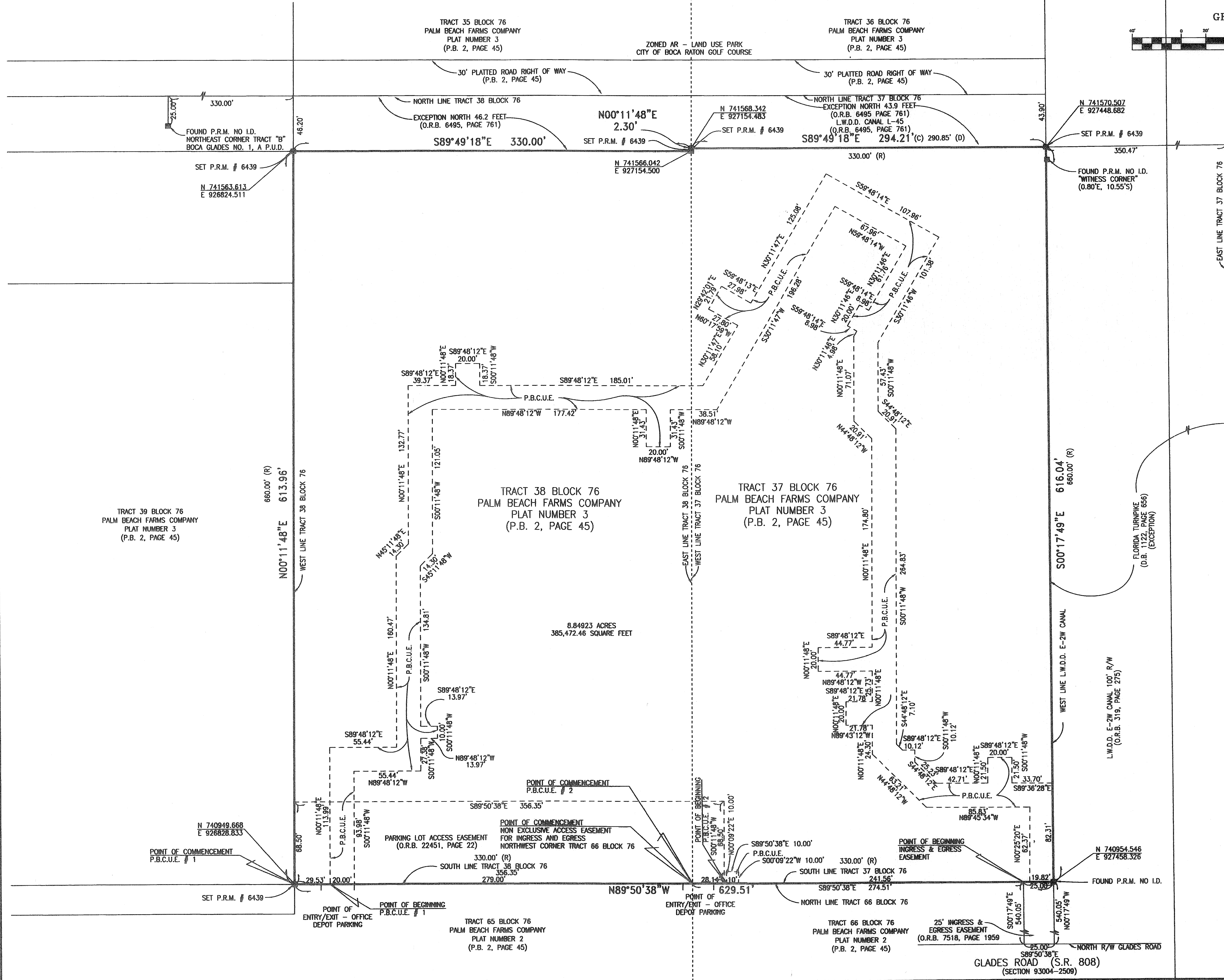


# GLADES ROAD STORAGE PLAT M.U.P.D.

A PORTION OF TRACTS 37, AND 38 BLOCK 76 OF THE PALM BEACH FARMS COMPANY  
PLAT NO. 3, IN SECTION 17, TOWNSHIP 47 SOUTH, RANGE 42 EAST,  
PALM BEACH COUNTY, FLORIDA  
SEPTEMBER 2008, SHEET 2 of 2



SITE DATA BOX  
 PETITION/CONTROL NUMBER = 5794-00  
 CONTAINING 8.84923 ACRES  
 385,472.46 SQUARE FEET

THIS INSTRUMENT WAS PREPARED BY  
 FOUNDING  
 BASELINE ENGINEERING  
 LAND SURVEYING, INC.  
 1400 N.W. 1st COURT  
 BOCA RATON, FLORIDA 33432  
 (561) 417-0700  
 email: blncad@belsouth.net